



INDUSTRIAL MAGZA
DIST. AUTORIZADO

MEX (55) 53 63 23 31 MTY (81) 83 54 10 18
QRO (442) 1 95 72 60 ventas@industrialmagza.com

Snack Food Duty MGS[®] Speed Reducers

*The Most Reliable Drive Solution for Your
Demanding Applications!*



**4 DAY
FOOD DUTY
DELIVERY**

"we don't say we're best...our customers do"



www.stober.com

STOBER Drives Inc. is proud to introduce the newly engineered extension of the quality proven MGS Food Duty speed reducer. The new, improved design of the input adapter along with the use of synthetic oil as standard, enables us to extend the warranty to a industry leading five years. The adaptability of the well known double wobble free bushing, makes this the unit to use in the toughest applications.



Stainless Steel Oil Fill Plug

Magnetic Drain Plugs

NEMA C-face Input Adapter with O-Ring

- Maintenance Free Long Life
- New Input Design
 - SHC630 Synthetic Oil

Flexible Input Coupling



Gears Supported with Dual Bearings in one piece housing for structural rigidity

Dual Output Seals

Bushing covers, with weep holes, protect seals against high pressure washing.

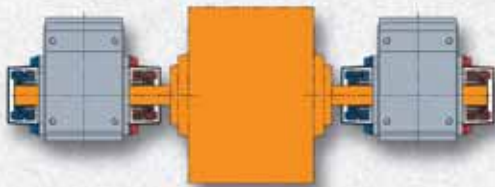


Uses the patented stainless steel double wobble-free bushing system for easy installation.

Standard Bushing Bore Sizes	
WFB1	1, 25mm
WFB2	1-1 ³ / ₁₆ , 30mm
WFB3	1-1 ¹ / ₂ , 30, 35mm
WFB4	1-1 ¹ / ₂ , 40mm
WFB5	1 ⁷ / ₁₆ - 2, 40mm
WFB6	1 ⁷ / ₁₆ - 2 ³ / ₁₆ , 40mm
WFB7	1 ¹⁵ / ₁₆ - 2 ³ / ₈
WFB8	2 ³ / ₁₆ - 2 ³ / ₄

5 YEAR WARRANTY NEW

Bushing mounts from either side.



Typical Part No. Example:

K302WG0100MR160/140BLL WFB3-108 EL1

- **K302** – Right Angle (**K**), Unit Size **3, 02** – Double Reduction
- **W** – Wobble Free Bushing
- **G** – Tapped Holes Housing
- **0100** – Ratio 0100 (10:1)
- **MR160/140** – Motor Adapter Size for NEMA 143/145TC
- **B** – Beverage Duty Paint
- **LL** – Long Life (5 Year Warranty)
- **WFB3-108** – 1¹/₂ bore bushing
- **EL1** – Mounting Position MUST BE SPECIFIED (See below.)

Designed for application specific mounting position.

EL1

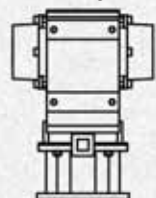
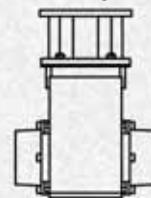
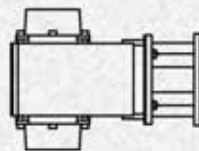
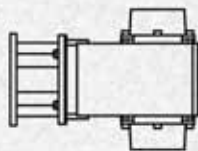
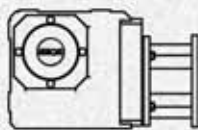
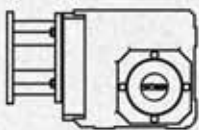
EL2

EL3

EL4

EL5

EL6



The STOBER difference = VALUE for you!

Even microscopic bugs have Nowhere to Hide on the STOBER Supreme Food Duty speed reducer!

NO product or liquid collections.

Cleanable to a microbiological level.

NO niches.

All units feature



anti-microbial coating.

NO harborage points.

"KE" Bushing Bore Sizes	
WFKE2	1-1/2
WFKE3	1-1/2
WFKE4	1-1/2

Maintenance free – Lubricated for Life.

Uses the stainless steel double wobble-free bushing system for easy installation.



Made to food industry compatible materials specifications.

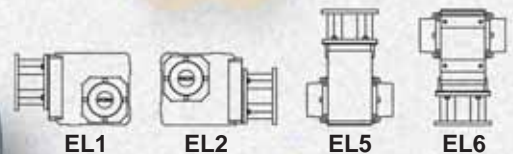
Standard Part No. Example:

K302WG0100MR160/140F WFB3-108
KE302WB0100MR160/140F-108

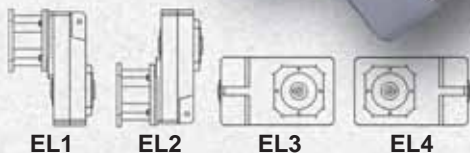
- **K302** – Right Angle (**K** or **KE**), Unit Size **3, 02** – Double Reduction
- **W** – Wobble Free Bushing
- **G** – Tapped Holes Housing, **B** – Basic Housing
- **0100** – Ratio 0100 (10:1)
- **MR160/140** – Motor Adapter Size for NEMA 143/145TC
- **F** – Food Duty Paint
- **WFB3** – Bushing Part No.
- **108** – 1 1/2 (1 and 8/16) Bore Bushing

Mounts in any horizontal output position.

Standard "K" Series Food Duty with double wobble free bushing.

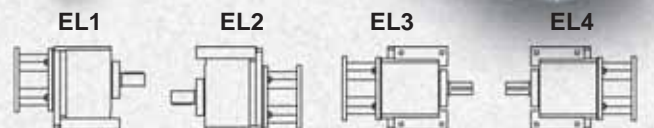


Standard "F" Series Food Duty with hollow output.



3 YEAR WARRANTY Standard

Standard "C" Series Food Duty



STOBER Drives Inc.
Maysville KY

ServoFit® Modular System Gearheads



MGS® Speed Reducers



**ComTrac® Mechanical
Variable Speed Drives**



STÖBER Antriebstechnik GmbH + Co. KG
Pforzheim Germany



ServoFit® Precision Planetary Gearheads

STOBER Drives, Inc.
1781 Downing Drive, Maysville KY 41056
Phone: 606 759-5090, FAX: 606 759-5045, Toll Free: 800 711-3588
Web: www.stober.com, E-mail: sales@stober.com
Silver Bullet AM® is a registered trademark of Burke Industrial Coatings.
MGS®, STOBER®, ComTrac®, and ServoFit® are registered trademarks of STOBER Drives, Inc.
Form No. 3029, Copyright September 2006, Printed in U.S.A.

